



GAT MONTHLY MEMBERSHIP PROGRESS REPORT

Results as of: 5/31/2023

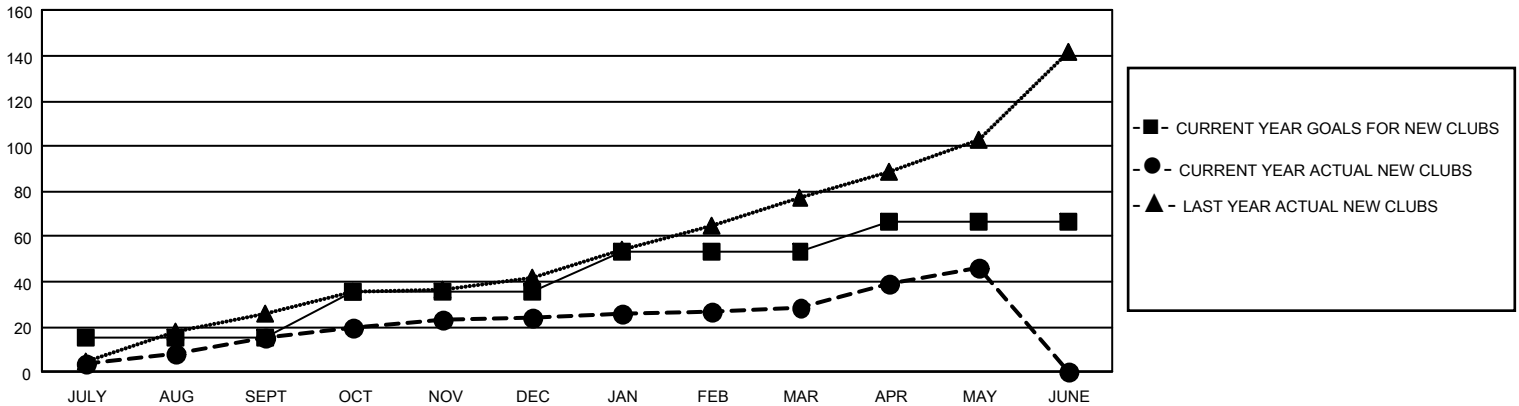
GAT Constitutional Area 5 - English Speaking Areas

REPORT DOES NOT INCLUDE CLUBS IN UNDISTRICTED AREAS.

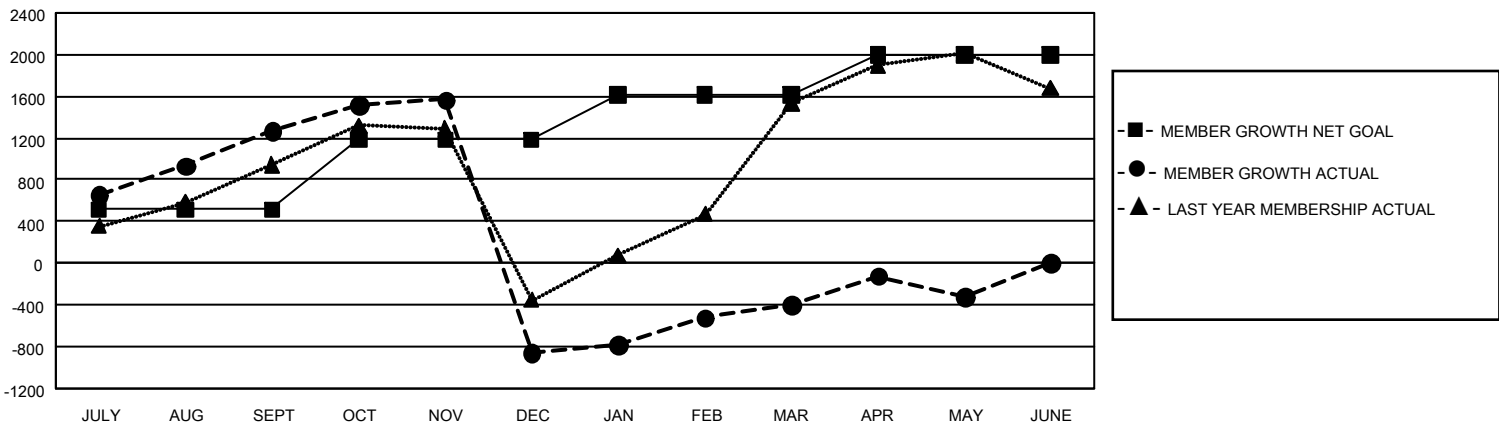
Clubs			
RESULTS FOR 2022-2023			
QUARTER	NEW CLUB GOAL	NEW CLUBS	DROPPED CLUBS
JULY/AUG/SEPT	45	15	11
OCT/NOV/DEC	63	9	46
JAN/FEB/MAR	51	5	14
APR/MAY/JUNE	42	17	2

Members			
RESULTS FOR 2022-2023			
QUARTER	MEMBER GROWTH NET GOAL	MEMBER GROWTH ACTUAL	DROPPED MEMBERS ACTUAL (including transfers)
JULY/AUG/SEPT	512	2,750	1,195
OCT/NOV/DEC	675	1,192	3,242
JAN/FEB/MAR	430	1,578	891
APR/MAY/JUNE	377	1,162	868

GOALS AND ACTUAL NEW CLUBS CUMULATIVE



GOALS AND ACTUAL MEMBERS CUMULATIVE



DROPPED CLUBS: 73	842 CLUBS OF 1,371 ADDED 1 OR MORE NEW MEMBERS	GENDER DISTRIBUTION	
		MALE 21,537 (54.09%) FEMALE 18,223 (45.76%) NON BINARY 0 (0.00%) PREFER NOT TO ANSWER 59 (0.15%)	
DROPPED MEMBERS		CLICK HERE FOR CUMULATIVE MEMBERSHIP DATA	
DECEASED 155 CLUB CANCELLED 1,942 OTHER 4,098 TOTAL 6,195	TOTAL FAMILY UNIT MEMBERS 9,921 FAMILY MEMBERS PAYING HALF DUES 6,110		